

PCP 2011

19th International Congress

Boston, MA: July 19th-22nd

*"Pushing the Boundaries of Constructivism:
Collaborating Across Theories, Applications, and Methods"*

CONGRESS PROGRAM

19TH INTERNATIONAL CONGRESS ON
PERSONAL CONSTRUCT PSYCHOLOGY

JULY 19-22, 2011
BOSTON, MASSACHUSETTS



Keynote Speakers

MICHAEL BAMBERG / HUBERT HERMANS / ELLYN KASCHAK

Featured Speakers

JAY S. EFRAN / SCOTT JOHNSON / LARRY LEITNER / SHEILA MCNAMEE /
SPENCER A. MCWILLIAMS / ROBERT A. NEIMEYER / JÖRN SCHEER /
BEVERLY WALKER / BILL WARREN / DAVID WINTER

Congress Organizers

JACK S. KAHN (CONGRESS CHAIR) / JONATHAN D. RASKIN (PROGRAM CHAIR)

CONTENTS

Contents.....	i
Introduction.....	1
Basic Information	1
Host Organization.....	1
Congress Organizers.....	1
Student Hosts	2
Registration.....	2
Acknowledgements.....	2
John Hancock Hotel & Conference Center	3
Address and Phone	3
History.....	3
Directions.....	4
Guest Rooms	5
Meeting Rooms	5
Amenities	6
Program Highlights.....	6
Keynote Speakers	6
Michael Bamberg.....	6
Hubert Hermans.....	6
Ellyn Kaschak.....	7
Featured Presentations	7
Personal Construct Psychology, Radical Constructivism, and Social Constructionism— Points of Contact and Divergence	7
Grief and Trauma after Violence.....	8
Remembering the Life and Work of Fay Fransella.....	8
Miller Mair: A Remembrance	9
Philo Café.....	9

Continuing Education.....	9
Gala Dinner.....	11
Liberty Hotel Address	11
Directions to Liberty Hotel.....	11
Schedule.....	14
Tuesday Morning, July 19.....	14
Tuesday Afternoon, July 19	15
Wednesday Morning, July 20	16
Wednesday Afternoon, July 20.....	17
Thursday Morning, July 21	18
Friday Morning, July 22.....	19
Friday Afternoon, July 22	20
Abstracts.....	21
Post-Congress Dialogical Approach Workshop.....	41
About Boston.....	41
Boston in the Summer	41
Summer Weather.....	41
What to Wear.....	42
The John Hancock Hotel & Conference Center's Top 12 Things to Do in Boston.....	43
Maps.....	44
Nearby Restaurants.....	49
Presenters.....	50
Space for Writing Down Additional Contact Information.....	57
Notes.....	58

INTRODUCTION

Beginning with personal construct psychology in 1955, constructivist-influenced theories have been used in multiple ways in psychology, other social sciences, and the humanities. The goal of this congress is to bring together those incorporating one or more modes of constructivist thought into research, theory, scholarship, and professional practice. Held in the heart of downtown Boston with keynotes by Ellyn Kaschak, Michael Bamberg, and Hubert Hermans and featured presentations by Jay Efran, Robert Neimeyer, Scott Johnson, Larry Leitner, Sheila McNamee, Spencer McWilliams, Jörn Scheer, Beverly Walker, Bill Warren, and David Winter, the congress promises to be an exciting event.

BASIC INFORMATION

HOST ORGANIZATION



This year's congress is hosted by the Constructivist Psychology Network, a network of persons interested in constructivist approaches to psychology, relationships, and human change processes. It is largely comprised of psychologists, but there are also members from related disciplines. Those interested in personal constructivism or related areas of constructivist, constructionist, narrative, or postmodern approaches to psychology are encouraged to join. CPN officially became a non-profit organization in July 2005.

CONGRESS ORGANIZERS

The congress is being co-organized by Jack S. Kahn and Jonathan D. Raskin.

Congress chair **Jack S. Kahn, Ph.D.**, just began a new position as program director for the Ph.D. program in clinical psychology at the California School of Professional Psychology, Fresno Campus. Following the success of his first text, *An Introduction to Masculinities*, Dr. Kahn has been engaged in a series of projects documenting various ways in which people resist hegemonic pressures of adhering to dominant masculinity. Dr. Kahn is a licensed psychologist and has worked as a consultant focusing on community engagement and assisting clinicians and educators enact principles of cultural competence in their professional activities.





Program chair **Jonathan D. Raskin, Ph.D.**, is a professor of psychology and counseling at the State University of New York at New Paltz. His scholarship focuses on constructivist counseling and psychotherapy, as well as articulating and clarifying constructivist theories. Dr. Raskin's published work includes five co-edited books, including the four volumes of the *Studies in Meaning* series. In 2010 Dr. Raskin received the George Kelly Award for outstanding scholarly contribution to constructivist psychology from the Constructivist Psychology Network. In addition to serving as managing editor of the *Journal of Constructivist Psychology*, Dr. Raskin is licensed as a psychologist in New York, where he maintains a small private practice.

STUDENT HOSTS

In addition to Jack and Jon, the congress is staffed by Student Hosts who are available to assist you and answer your questions. Student hosts can be identified by the Gold Stars on their congress badges. They should also be wearing their green congress t-shirt. If you see someone with a Gold Star on his or her badge, feel free to ask for assistance!

Student Hosts: Benjamin L. Brett, Jamie Coy, Monique Dauphin, Victoria Formosa, Martyna Górska, Christina LaPerle, Hillel Lowinsky, Yolanda Maldonado, Agata Pasikowska, Christopher Putnam, Julia Taylor, Carlos Torres

REGISTRATION

The Congress Registration Desk will be open for registration and check in as follows:

- Tuesday & Wednesday: 7:30-8:30 AM
- Thursday & Friday: 8:00-8:30 AM

ACKNOWLEDGEMENTS

The organizers wish to acknowledge the following people for their help in organizing the congress:

- Ginette Colon, Curry College graphic design student, for creating the congress logo
- Stephanie Lewis Harter, President, Constructivist Psychology Network
- Sara Bridges, for assistance with reviewing program submissions
- Valerie Domenici, Treasurer, Constructivist Psychology Network. Without Valerie's patient assistance, nothing would have been paid for!
- The Steering Committee of the Constructivist Psychology Network
- The staff of the John Hancock Hotel & Conference Center
- We send a special acknowledgement to Don Granvold, who is unable to be with us this year in Boston for health reasons but who is co-organizing next summer's CPN conference in Arlington, Texas with Stephanie Lewis Harter.

JOHN HANCOCK HOTEL & CONFERENCE CENTER



The congress location is the John Hancock Hotel & Conference Center. This venue features conference space and 64 non-smoking guest rooms with complimentary continental breakfast and weekday newspaper. Attendees can enjoy the convenience of having the congress program and congress accommodations housed together in one convenient location.

ADDRESS AND PHONE

John Hancock Hotel & Conference Center
40 Trinity Place, Boston, MA 02116
Phone (617) 933-7700 | Fax (617) 933-7709

HISTORY

Built in 1925, The John Hancock Hotel & Conference Center started out as the Club House for the University Club of Boston. The opening was on November 14, 1926. The design of the Club House is in the Adams style with an exterior of limestone and Harvard brick.

When entering the building, there was a barbershop to the left, a coatroom on the right and around the corner were the elevators, office, telephone rooms, office of the Manager and ladies' cocktail lounge. To the left of the stairs leading to the second floor was the entrance to the men's locker room and bowling alleys. Behind the stairs was the entrance to the gallery of the swimming pool.



The double stairway to the second floor was of marble with finely hand-wrought iron balustrades with bronze handrails. They led to a large elliptical lobby on the second floor with a 20 foot ceiling. There was red marble from Spain, black marble from Belgium, black and gold marble from Italy and pink marble from Minnesota, along with other marble from France, Tennessee and Colorado.



Off this main lobby were the lounge and dining room. The lounge was 40 feet wide by 80 feet long fitted with every comfort. The dining room, with a capacity of 250 people, was 35 feet by 80 feet.

The third floor consisted of the 40 by 80 foot library, billiard room with 10 tables and 5 card rooms along with the Grill room and bar. The fourth floor contained the ladies' dining room and private dining rooms with the remaining floors comprised of guest rooms.

The Club House was eventually sold on August 1, 1962 to the Chandler School for Women, due to the culmination of the Depression, high taxes, loss of room revenue, gasoline rationing and a loss of 700 members to the armed services.

In June of 1971, the Chandler School for Women resold the building to the John Hancock Mutual Life Insurance Company.

The John Hancock Institute opened in June of 1972 and was used to house and train new John Hancock insurance agents. The building was closed for renovations from January 1986 to September 1986, after which the John Hancock Conference Center was open to the public for both for meeting space and guest rooms.

DIRECTIONS

Directions on how to get to the conference center are provided below.

BY CAR FROM LOGAN AIRPORT

Follow signs to Sumner Tunnel. After exiting the tunnel take second right onto Rt. 93 north. Exit at Cambridge/Storrow Drive. Follow Storrow Drive signs to Back Bay and exit at Copley Square (a left exit). Turn right at the lights onto Beacon Street. At the second set of lights, turn left onto Clarendon Street. Follow Clarendon St. through (7) sets of lights and look for the Garage @ 100 Clarendon on the right. The cost for overnight parking is \$27.00.

BY CAR FROM WEST

Follow the Mass Pike (Rt. 90) East towards Boston and take Exit 22 (Prudential Center/Copley Square). Bear right to Copley Square. This will bring you onto Stuart Street. At the second set of lights, take a right onto Clarendon Street and look for Garage @ 100 Clarendon on the right. The cost for overnight parking is \$27.00.

BY CAR FROM NORTH/SOUTH

Follow Route 93 towards Boston and take Exit 26 (Storrow Drive/Cambridge). Follow signs onto Storrow Drive/Back Bay. Follow Storrow Drive signs to Back Bay and exit at Copley Square (a left exit). Turn right at the lights onto Beacon Street. At the second set of lights, turn left onto Clarendon Street. Follow Clarendon St. through (7) sets of lights and look for the Garage @ 100 Clarendon on the right. The cost for overnight parking is \$27.00.

BY SUBWAY/COMMUTER RAIL

BACK BAY STATION

Orange Line or Commuter Rail. Turn right on Dartmouth Street. Make first right onto Stuart Street. Make first right onto Trinity Place. The conference center is on the left.

COPLEY STATION

Green Line. Walk diagonally across Copley Square towards Trinity Church. Walk between Copley Plaza Hotel and John Hancock Tower onto Trinity Place. The conference center is one block down on left.

GUEST ROOMS



The John Hancock Hotel & Conference Center's guest rooms are distinguished, intimate and comfortably furnished. A continental breakfast along with a complimentary weekday newspaper and discounted parking is included for overnight guests. All guest rooms have cable TV with HBO, in-room coffee maker, iron and ironing board, Bath and Body Works bath products, and individually controlled heating and air conditioning.

MEETING ROOMS

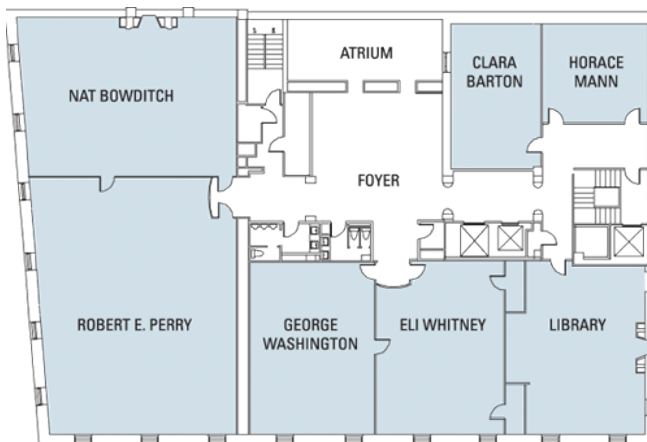
The congress will be held on the third floor of the conference center.

Sessions will be held in the following rooms:

Whitney
Washington
Perry
Bowditch



Third floor map of the John Hancock Hotel & Conference Center:



AMENITIES



Complimentary WiFi Internet access is available in public areas.

Continuous and complimentary food and drink will be provided for congress attendees to enjoy between sessions.

PROGRAM HIGHLIGHTS

KEYNOTE SPEAKERS

Keynote addresses will be given by three internationally-known speakers.

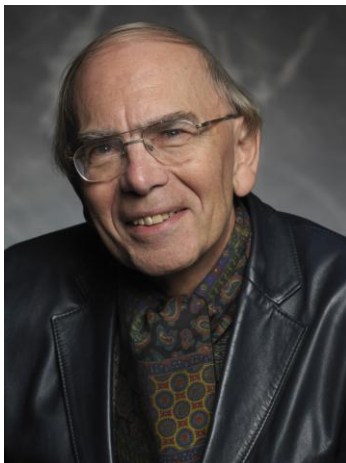
MICHAEL BAMBERG

Michael Bamberg received a Staatsexamen in German, Politics and Education from the Universität Marburg, Germany in 1975, an M.Phil. in Linguistics from the University of York, England in 1978, and a Ph.D. in Psychology from the University of California at Berkeley in 1985. He has been at Clark since 1986. His research is in the area of discourse and identity with an emphasis on how narratives (particularly “small stories”) are employed as general sense-making and identity-building strategies. Methodologically, he approaches the study of identity microanalytically (microgenetically) as an emergent process that is deeply embedded in local and situated context. His research projects are in the area of adolescent and post-adolescent identity formation, particularly the emergence of professional identities.



The title of Dr. Bamberg’s keynote address is *Who Am I? Constructing Stories, Constructing Identities*.

HUBERT HERMANS



Hubert Hermans is one of the main theorists in narrative psychology and in narrative psychotherapy. During his career he has developed several influential methods and theories. One of them is the Self Confrontation Method (SCM) that has led to the establishment of the Association for SCM practitioners that had approximately 300 members in 2010. Another is the Dialogical Self Theory that has led to the organization of biennial international conferences, the establishment of the International Society for Dialogical Science (ISDS) and the *International Journal for Dialogical Science* (IJDS). He is author of *Self-Narratives: The Construction of Meaning in Psychotherapy* (with Els Hermans-Jansen), *The Dialogical Self in Psychotherapy* (with Giancarlo Dimaggio)

and *Dialogical Self Theory: Positioning and Counter-Positioning in a Globalizing Society* (with Agnieszka Hermans-Konopka).

The title of Dr. Herman's keynote address is *Dialogical Self Theory: Positioning and Counter-Positioning in a Globalizing Society*.

ELLYN KASCHAK

Ellyn Kaschak is an internationally acclaimed and award-winning psychologist, author and teacher. She is well-known as a speaker, workshop leader, human rights advocate and a public intellectual. She has been Professor of Psychology at San Jose State University since 1974, where she has also been the Chairperson of the graduate program in Marriage, Family and Child Counseling and Director of the University's Family Counseling Service. She is one of the founders of the field of feminist psychology, which she has practiced since its inception some 30 years ago, and has published numerous articles and chapters on the topic, as well as the award-winning book *Engendered Lives: A New Psychology of Women's Experience*.



The title of Dr. Kaschak's keynote address is *The Mattering Map*.

FEATURED PRESENTATIONS

There will be three featured presentations at the congress:

PERSONAL CONSTRUCT PSYCHOLOGY, RADICAL CONSTRUCTIVISM, AND SOCIAL CONSTRUCTIONISM—POINTS OF CONTACT AND DIVERGENCE

Jay S. Efran, **Sheila McNamee**, and **Bill Warren** will engage in an unstructured discussion about these three major varieties of constructivism, with Efran representing radical constructivism, McNamee social constructionism, and Warren personal construct psychology. **Jonathan D. Raskin** will moderate.



GRIEF AND TRAUMA AFTER VIOLENCE

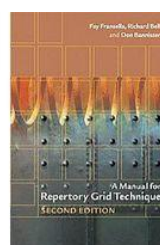
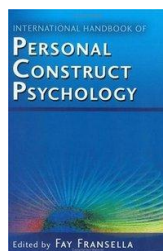
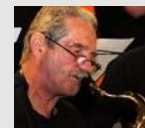


Robert A. Neimeyer and **Scott Johnson** will have a one-on-one conversation about grief and trauma following violent incidents. Dr. Neimeyer is a leading scholar-practitioner in the area of grief and loss, while Dr. Johnson assisted his campus community as it dealt with the aftermath of the 2007 mass-shootings at Virginia Tech University.

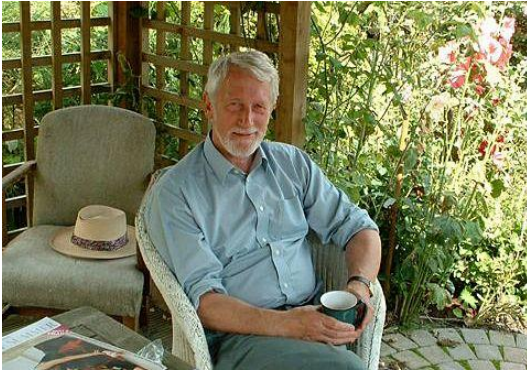


REMEMBERING THE LIFE AND WORK OF FAY FRANSELLA

David Winter, Beverly Walker, Spencer McWilliams, and Jörn Scheer will present papers celebrating the life and achievements of the late personal construct psychologist **Fay Fransella**, who died on January 14.



MILLER MAIR: A REMEMBRANCE



Larry Leitner is organizing this symposium tribute to our recently lost friend and colleague **Miller Mair**, who passed away last month.

As this session has been added at the last minute following Miller's unexpected death on June 9, further details about speakers will be announced at the congress itself.

PHILO CAFÉ

As has become a tradition at recent conferences, this year's congress will feature a Philo Café discussion related to constructivism (those in attendance will select the specific topic). Franz Epting will lead.

The Philo Café will take place on Tuesday evening (July 19) from 8:00-9:30 PM at the John Hancock Hotel & Conference Center. Meet in the Foyer of the Conference Center (see floor plan map on p. 5 for location of the foyer).

CONTINUING EDUCATION

Select sessions are available for Continuing Education credit. These sessions all will be held in Bowditch (304)—with the exception of Hubert Hermans' congress-opening keynote address, which is in Perry (303). Attendees can pay a **flat fee of \$40 to earn CE credits** for as many CE sessions as they wish to attend. CE credits are approved through the American Psychological Association's Society of Humanistic Psychology.

Below is all the information you need to know about obtaining APA Continuing Education credit (*for psychologists*) for the presentations you attend during the PCP 2011 Congress. Please read this information carefully to make sure you do not miss out on the opportunity to receive the maximum number of CE credits. The guidelines established are necessary in order to meet the requirements of our APA CE Sponsor (the Society for Humanistic Psychology) and also to manage offering CEs at such a large gathering.

Please adhere to the following criteria to obtain CE credits:

- We only offer APA CEs. You are welcome to sign up for CEs even if you are not a psychologist; however, it is your responsibility to know whether your board will accept these or not.
- CE sessions are worth .5, 1, or 2 CEs. The number of CEs for sessions is included with their listings in both the schedule and abstract sections of the program.

- **You must pay for CEs prior to receiving any CE credit.** We are charging a flat rate of \$40 for as many CE credits as you can get during the conference (post-congress workshop CEs are separate). To sign up for CEs, please go to the Registration Table.
- CE certificates will be provided at the individual presentation you attend. When you turn in your evaluation and sign out at the end of the presentation, you will be provided with your CE certificate. You will receive individual certificates for each CE presentation you attend. ***Be sure to get your CE certificate at the end of the presentation. If you do not receive your certificate at the end of the presentation we may not be able to provide a certificate.***
- Due to limitations in staffing, we may not be able to provide CEs for presentations you attend prior to paying for your CEs, even if you sign in and out.
- **You must attend each session in its entirety.** If you miss more than 5 minutes per hour of any presentation we will not be able to offer you credit.
- **You must sign in and out of each presentation in order to receive credit.** CE tables will be located in the Perry (303) and Bowditch (304) presentation rooms. Not all presentations in these rooms are available for CEs. See the congress program for details on which sessions in these rooms are CE-eligible.
- **The individuals working the CE tables will remove the sign-in sheets 5 minutes after the presentation begins. If you arrive late and the sign in sheets have been removed, please do not ask to sign in** as you will not be allowed to do so and this may cause a distraction from the presentation.
- At the end of each presentation, you *must* complete and turn in an evaluation form to be turned in when you sign out. To save paper, we have created generic CE forms and provided a small sheet that matches the objectives separately. Please be sure to grab both sheets when signing in.
- The sign in sheets will be available for approximately 10 minutes following the presentation, so please be sure to sign out promptly after the presentation. After they have been removed, they will no longer be available for you to sign out and you will not be able to receive any credit.
- If you have any concerns or complaints about the CE process, please direct these to congress organizers Jonathan Raskin or Jack Kahn. Most of the workers at the CE tables are student volunteers and will not be able to assist you with any concerns. After the congress, you may direct all CE-related concerns to the Society of Humanistic Psychology CE coordinator, Dr. Louis Hoffman, at:

Louis Hoffman, PhD
 Saybrook University
 747 Front Street, 3rd Floor
 San Francisco, CA 94111-1920
 (800) 825-4480
lhoffman@saybrook.edu

- Please keep in mind that the individuals working at the CE Tables are student volunteers who have offered their time to help allow us to offer CE credit. They may not have answers to all of your questions pertaining to the CE process and requirements, so please direct your questions to the congress organizers. Also, please show your appreciation to our wonderful student volunteers who are helping make the congress a success!

GALA DINNER

The Gala Dinner, a Mediterranean-style buffet with hors d'oeuvres and a cash bar, will be **held in the fourth floor rotunda at the Liberty Hotel**. One gala dinner ticket is included with congress registration. Extra gala dinner tickets for those accompanying you to the gala dinner but not registering for the congress may be purchased. See the congress organizers for details. Family and friends are welcome!

LIBERTY HOTEL ADDRESS

The Liberty Hotel
215 Charles Street, Boston MA 02114
Phone (617) 224-4000 | Fax (617) 224-4001

DIRECTIONS TO LIBERTY HOTEL

Here are directions for three different ways to get from the John Hancock Hotel & Conference Center to the Liberty Hotel, site of the Gala Dinner.

The different modes of travel are:

- PUBLIC TRANSPORTATION
- WALKING
- DRIVING

	PUBLIC TRANSPORTATION TO LIBERTY HOTEL
1.	Walk to Copley Station - Inbound (About 4 mins)
2.	Light rail - Green Line Direction: North Station / Service run by MBTA Depart Copley Station - Inbound (Stop ID: 70154) Arrive Park St Station - Green Line Eastbound (Stop ID: 70200)
3.	Walk to Park St Station - to Alewife (About 4 mins)
4.	Subway - Red Line Direction: Alewife 5 mins to make transfer / Service run by MBTA Depart Park St Station - to Alewife (Stop ID: 70076) Arrive Charles/MGH Station - Outbound (Stop ID: 70074)
5.	Walk to 215 Charles St, Boston, MA 02114 (About 2 mins)

	WALKING DIRECTIONS TO LIBERTY HOTEL	
1.	Head north on Trinity Pl toward Stuart St	46 ft
2.	Turn right at Stuart St	305 ft
3.	Turn left at Clarendon St	0.4 mi
4.	Turn right at Beacon St	0.2 mi
5.	Turn left toward David G Mugar Way/Embankment Rd	0.2 mi
6.	Continue straight onto David G Mugar Way/Embankment Rd	0.1 mi
7.	Slight right at David G Mugar Way	0.1 mi
8.	Turn left at Charles St/Pleasure Rd Continue to follow Charles St Destination will be on the right	341 ft



	DRIVING DIRECTIONS TO LIBERTY HOTEL	
1.	Head north on Trinity Pl toward Stuart St	46 ft
2.	Take the 1st right onto Stuart St	0.2 mi
3.	Turn left at the 2nd cross street onto Berkeley St	0.4 mi
4.	Slight right to merge onto David G Mugar Way/Embankment Rd	0.4 mi
5.	Slight right at David G Mugar Way	0.1 mi
6.	Turn left at Charles St/Pleasure Rd Continue to follow Charles St Destination will be on the right	341 ft



SCHEDULE

TUESDAY MORNING, JULY 19

7:30-8:30 AM	Registration and Check In (Foyer)			
Room	Whitney (301)	Washington (302)	Perry (303)	Bowditch (304)
8:30-8:45 AM			Welcome and Announcements	
8:45-10:15 AM			Hubert Hermans <i>Dialogical Self Theory: Positioning and Counter-Positioning in a Globalizing Society</i> Session #1: Keynote (1 CE)	
10:30-11:00 AM	Finn Tschudi & Magni Martens <i>A Constructivist Approach to Grid Studies</i> Session #2: Paper	Tom Strong <i>Conceptually Upstream: Revisiting Old Tributaries of Thought for "New" Constructivist Ideas and Practices</i> Session #3: Paper	Larry M. Leitner, Jeffrey Schweitzer, & Rebecca Ezechukwu <i>Transpersonal Issues in Experiential Personal Construct Psychology</i> Session #4: Symposium	Harry Procter <i>Interviewing Skills: Using Relational Constructs, Levels of Interpersonal Construing and Qualitative Grids</i> Session #5: Workshop (1 CE)
11:15-11:45 AM	Gail Adorno <i>Identity as a Mediator of Existential Distress in Persons with Advanced Incurable Cancer</i> Session #6: Paper	Spencer A. McWilliams <i>Embracing Fading Truths: Reaffirming a Process Ontology</i> Session #7: Paper		
12:00-12:30 PM	Miroslav Filip <i>George Kelly Meets Georg Rasch: Specific Objectivity as a Fundamental Epistemic, Scientific, and Psychological Principle</i> Session #8: Paper	Dawn Johnston & Jared French <i>Rogers' Core Conditions and the Therapeutic Alliance: A Social Constructionist Perspective</i> Session #9 Paper	Emily Reese & Larry M. Leitner <i>Hearing Voices: Mental Illness or Alternative Experience?</i> Session #10: Paper	
12:30-1:45 PM	Lunch on your own			

TUESDAY AFTERNOON, JULY 19

12:30-1:45 PM	Lunch on your own			
Room	Whitney (301)	Washington (302)	Perry (303)	Bowditch (304)
2:00-2:30 PM	Tom Strong, Joaquín Gaete Silva, Ines Sametband, Jared French, Tanya Mudry, & Emily Doyle <i>Conversational Identity-Work and Discourses of Recovery</i> Session #11: Case Presentation	Marcos Pereira Estellita Lins & Angela Cristina Moreira da Silva <i>Reconciling Quantitative and Qualitative Research when Structuring Complex Societal Problems—A Cognitive Mapping Constructivist Approach</i> Session #12: Paper		Donald J. Domenici & Amberly R. Panepinto <i>Making Meaning While Making the Grade: Student Development Theory and PCP</i> Session #13: Case Presentation (.5 CE)
2:45-3:15 PM		Kristian David Weihs <i>Voices Lost, Voices Found: George Kelly at the Old Saybrook Conference</i> Session #14: Paper	Krista Socholotiuk & Dawn Johnston <i>A Constructivist Model of Clinical Supervision</i> Session #15: Paper	
3:30-4:30 PM			Larry M. Leitner and Others <i>Miller Mair: A Remembrance</i> Session #16: Symposium	
4:45-6:00 PM			Robert A. Neimeyer & Scott Johnson <i>Grief and Trauma after Violence</i> Session #17: Discussion Session	
6:15-7:45 PM	Dinner on your own			
8:00-9:30 PM	Philo Café (Led by Franz Epting. Meet in Foyer.)			

WEDNESDAY MORNING, JULY 20

7:30-8:30 AM	Registration and Check In (Foyer)			
Room	Whitney (301)	Washington (302)	Perry (303)	Bowditch (304)
8:30-8:45 AM			Announcements	
8:45-10:15 AM			Jay S. Efran, Sheila McNamee, & Bill Warren Moderator: Jonathan D. Raskin <i>Personal Construct Psychology, Radical Constructivism, and Social Constructionism— Points of Contact and Divergence</i> Session #18: Discussion Session	
10:30-11:00 AM	Jonathan D. Raskin & Benjamin L. Brett <i>Stigma and the Reverse Golden Section Among Counselors</i> Session #19: Paper	Miroslav Filip, Marie Kovarova, Hana Prikrylova Kucerova, & Radovan Prikryl <i>Verbal and Non-Verbal Construct Systems in Schizophrenia</i> Session #20: Paper		Agnieszka Hermans- Konopka & Ton Voogt <i>Stage Model of Work with Emotions</i> Session #21: Workshop (2 CE)
11:15-11:45 AM	Michael F. Mascolo <i>What is Sexual Desire a Desire For? A Developmental Analysis</i> Session #22: Paper	David Winter, Nick Reed, Joan- Miquel Soldevilla, Duygu Kuzu, & Esther Aslan <i>An Exemplary Life? Analyzing the Autobiography of the Commandant of Auschwitz Using PCP Methods</i> Session #23: Paper	Sabrina Cipolletta <i>At First Hand: How We Get in Touch with Each Other</i> Session #24: Workshop	
12:00-12:30 PM	Ilaria Bregant, Paola Orlando, Giulia Sandri, & Massimo Giliberto <i>The "Narrative Theme" Method: Between Telling Observer and Observing Teller</i> Session #25: Paper	Julia R. Lonoff, Joel Gaffney & Larry M. Leitner <i>Understanding Childhood Trauma: An Experiential Personal Construct Psychology Exploration of Developmental/ Structural Arrest</i> Session #26: Paper		
12:30-1:45 PM	Lunch on your own			

WEDNESDAY AFTERNOON, JULY 20

12:30-1:45 PM	Lunch on your own			
Room	Whitney (301)	Washington (302)	Perry (303)	Bowditch (304)
2:00-2:30 PM	Olga Pucurull, Guillem Feixas, María del Carmen Aguilera, & María Jesús Carrera <i>What Changes in the Personal Construct System During Psychotherapy? A Naturalistic Study of Brief-Oriented Construct Therapy</i> Session #27: Paper	Judith Lombardi <i>What's so Radical about Radical Constructivism?</i> Session #28: Workshop	Jeffrey R. Schweitzer <i>Re-membering the Dead: Constructivist and Archetypal Perspectives on Grief and Mourning</i> Session #29: Paper	Arlene C. Vadum <i>Performance and Personal Change: Using Concepts from Fixed Role Therapy to Improve Communication Skills</i> Session #30: Workshop (1 CE)
2:45-3:15 PM	Allan Hunter <i>Archetypes in 3000 Years of Western Literature: An Under-Regarded Way of Making Meaning</i> Session #31: Paper		Jesús Garcia-Martínez et al. <i>Cognitive Complexity and Personal Identity in Women that Report Gender Violence</i> Session #32: Paper	
3:30-4:00 PM	Hideaki Imai & Larry M. Leitner <i>Death Acceptance Through A Constructivist Perspective</i> Session #33: Paper	Mark Paris <i>Critiquing the Fit Between Constructs and Reality</i> Session #34: Paper		Jerald R. Forster <i>Constructing Strength-Focused Relationships</i> Session #35: Workshop (1 CE)
4:15-4:45 PM	Gloria Dada Sánchez, Guillem Feixas, José Soriano, & Marta Salla <i>Construction of Self and Others, Cognitive Conflicts and Differentiation in Eating Disorders</i> Session #36: Paper	Alexandra L. Adame, Larry M. Leitner, & April J. Faidley <i>The Call of the Other: A Philosophical Elaboration of the "Integral Universe"</i> Session #37: Paper	Vivien Burr, Massimo Giliberto, & Trevor Butt <i>"Walking like an Italian, Speaking like an English Person": Construing the Cultural Other and the Self</i> Session #38: Paper	
5:00-5:45 PM	Regional Business Meeting: APCG	Regional Business Meeting: EPCA		Regional Business Meeting: CPN
5:45-6:30 PM			International Business Meeting: CPN, EPCA, & APCG	
7:00-9:15 PM	Dinner on your own			

THURSDAY MORNING, JULY 21

8:00-8:30 AM	Registration and Check In (Foyer)			
Room	Whitney (301)	Washington (302)	Perry (303)	Bowditch (304)
8:30-8:45 AM			Announcements	
8:45-10:15 AM			Ellyn Kaschak <i>The Mattering Map</i> Session #39: Keynote	
10:30-11:00 AM	Jesús Garcia-Martínez, M ^a Carmen Orellana-Ramírez, & Rafael Guerrero-Gomez <i>New Measures of Grid: Relative Contribution as an Indicator of Therapeutic Change</i> Session #40: Paper	Melissa Karnaze <i>Cultivating Compassion: Investigating the Link Between Cognitive Reappraisal and Structural Differentiation in the Repertory Grid</i> Session #41: Paper		Sara K. Bridges <i>Making Meaning of Sexuality: A Constructivist Approach to Sex Therapy</i> Session #42: Workshop (1 CE)
11:15-11:45 AM	Kellie Buckley-Walker, Trevor Crowe, & Peter Caputi <i>Experiences of Caregiving and Identity in Family Recovery</i> Session #43: Paper	Harry Procter <i>PCP and the Categorical Philosophers: Kant, Hegel and Peirce</i> Session #44: Workshop	Roy N. Freed <i>A Non-Academician's Exploring the Evolution-Created Mind's Mechanism Unmasked Him as a Confirmed Constructivist</i> Session #45: Paper	
12:00-12:30 PM	Gloria Dada Sánchez, Adrián Montesano, Adrian Chaurand, Marta Oporto, & Guillem Feixas <i>Cognitive Conflicts in Unipolar Depression: A Repertory Grid Study</i> Session #46: Paper		Jerald R. Forster <i>Amalgamating Constructivist Psychology with Positive Psychology</i> Session #47: Paper	Jill C. Thomas <i>An EPCP Understanding of Internet Pornography Addiction</i> Session #48: Paper (.5 CE)
12:30-1:45 PM	Lunch on your own			
2:00-6:30 PM	FREE AFTERNOON / NO CONGRESS SESSIONS			
7:00-9:15 PM	Dinner on your own			

FRIDAY MORNING, JULY 22

8:00-8:30 AM	Registration and Check In (Foyer)			
Room	Whitney (301)	Washington (302)	Perry (303)	Bowditch (304)
8:30-8:45 AM			Announcements	
8:45-10:15 AM			David Winter, Beverly Walker, Spencer A. McWilliams, & Jörn Scheer <i>Remembering the Life and Work of Fay Fransella</i> Session #49: Symposium	
10:30-11:00 AM	Katherine Hayes <i>Therapy and Authorship: Interdisciplinary Implications for the Concept of the Co-constructed Narrative Self</i> Session #50: Paper	Gail Noppe-Brandon <i>Alia: A Black and White Case of Narrative Reconstruction</i> Session #51: Paper	Poster Session <ul style="list-style-type: none"> Rosario Antequera-Jurado et al. Martyna Gorska Patricia Balcázar Nava et al. Gloria Margarita Gurrola Peña, Patricia Balcázar Nava et al. Gloria Margarita Gurrola Peña, José Antonio Virseda Heras, et al. Agata Pasikowska 	Ton Voogt & Agnieszka Hermans-Konopka <i>Dialogical Self Theory as a Basis for New Methods in Management Development</i> Session #53: Workshop (2 CE)
11:15-11:45 AM	Marie-Louise Österlind <i>Spiders Caught Up by the Web: Social Care Mangers Reflect Over Their Work Situation</i> Session #54: Paper	Gloria Dada Sánchez, Guillem Feixas, Eugénia Ribeiro, & Joana Senra <i>Working with Cognitive Conflicts: A Manualized Proposal</i> Session #55: Workshop		
12:00-12:30 PM	Sharalyn Jordan <i>Dialogically Queer: The Narrative Negotiation of Transgressive Genders and Sexualities</i> Session #56: Paper		Session #52: Posters	
12:30-1:45 PM	Lunch on your own			

FRIDAY AFTERNOON, JULY 22

12:30-1:45 PM	Lunch on your own			
Room	Whitney (301)	Washington (302)	Perry (303)	Bowditch (304)
2:00-2:30 PM	Susan Cook & Karen Krupar <i>Understanding Academic Collaboration: A Comparative Methods Study</i> <i>Contrasting Survey Methods with PCP</i> Session #57: Paper	Anthony Pavlo & Larry M. Leitner <i>Construing Psychosis: A Constructivist, Existential-Phenomenological and Psychoanalytic Account</i> Session #58: Paper	John M. Fisher <i>What Makes a Good, Safe Road Work Gang?</i> Session #59: Paper	
3:00-4:30 PM			Michael Bamberg <i>Who Am I? Constructing Stories, Constructing Identities</i> Session #60: Keynote	
6:00 PM	Meet in lobby of Conference Center for trip to Liberty Hotel			
7:00-10:00 PM	Gala Dinner, Liberty Hotel			



Liberty Hotel, Site of the Gala Dinner

ABSTRACTS

Abstracts are alphabetized by first-author last name.

CE signifies a session that is available for Continuing Education. The number of CE credits is indicated.

Alexandra L. Adame, Larry M. Leitner, & April J. Faidley

The Call of the Other: A Philosophical Elaboration of the "Integral Universe"

In this paper we will explore Kelly's concept of an "integral universe" and the notion of transpersonal responsibility, which is a sense of responsibility to attend to the needs of humanity at large. We will describe the philosophical underpinnings of these topics by using Martin Buber's and Emmanuel Levinas's work to explicate the meaning of transpersonal responsibility.

Session #37: Paper / Wednesday, July 20, 4:15-4:45 PM / Washington (302)

Gail Adorno

Identity as a Mediator of Existential Distress in Persons with Advanced, Incurable Cancer

Social constructionism and role theory are used in conceptualizing identity challenges during treatment for advanced, incurable cancer. Theories and concepts from sociology, sociological social psychology, anthropology, and existentialism illustrate how contextual factors contribute to a sense of liminality and distress in this population. Implications of this conceptual model for clinical practice are discussed.

Session #6: Paper / Tuesday, July 19, 11:15-11:45 AM / Whitney (301)

Rosario Antequera-Jurado, Jesús García-Martínez, Carmen Tovar-Sánchez, M^a Dolores Franco-Fernández, Celia Llopis-Jiménez, Alicia Berenguer-Mellado, M^a José López-Rojas, Inmaculada Rodríguez-García, & Julio Antonio Guija-Villa

Cognitive Structure of Male Batterers involved in Gender Violence Criminal Prosecution

The construct systems of male offenders who committed gender violence were studied. Cognitive structure was analyzed using a grid. Male offenders are characterized by low intensity and complexity. They show high self-esteem, but have difficulties giving meaning to constructs related to aggression and self-control.

Session #52: Posters / Friday, July 22, 10:30 AM-12:30 PM / Perry (303)

Patricia Balcázar Nava, Gloria Margarita Gurrola Peña, Claudia Rocio Bueno Castro, & Saul Urcid Velarde

Construction of Self and Cognitive Conflicts Among Type 2 Diabetics

This study attempted to examine the relationship between the construction of the self and cognitive conflicts in two groups of patients with a Type 2 Diabetes diagnosis, from which one showed adherence to treatment and the other one does not.

Session #52: Posters / Friday, July 22, 10:30 AM-12:30 PM / Perry (303)

Michael Bamberg

Who Am I? Constructing Stories, Constructing Identities

The analysis of “small stories” (stories-in-interaction) is presented as a way to investigate the micro-genesis of identities. Working from the assumption that identities are coming to existence in navigations of “identity dilemmas,” *Positioning Analysis* is the framework that reveals the building blocks that stories offer for the analysis of identities.

Session #60: Keynote / Friday, July 22, 3:00-4:30 PM / Perry (303)

Ilaria Bregant, Paola Orlando, Giulia Sandri, & Massimo Giliberto

The “Narrative Theme” Method: Between Telling Observer and Observing Teller

This paper presents a preliminary version of a constructivist-narrative diagnostic method originally created by Massimo Giliberto for clinical supervision and then elaborated by the group of authors during the post-graduate specialization course in constructivist psychotherapy.

Session #25: Paper / Wednesday, July 20, 12:00-12:30 PM / Whitney (301)

Sara K. Bridges

Making Meaning about Sexuality: A Constructivist Approach to Sex Therapy

Most sex therapists agree that sexuality consists of more than biology, yet the psychological and interpersonal aspects are seen as simple counterparts to the biological. In this clinical case presentation case examples will be used to elucidate traditional approaches to sex therapy and their core assumptions while also presenting an alternative view of sex therapy from a constructivist coherence therapy perspective.

Session #42: Workshop / Thursday, July 21, 10:30-11:45 AM / Bowditch (304) / 1 CE

Kellie Buckley-Walker, Trevor Crowe, & Peter Caputi

Experiences of Caregiving and Identity in Family Recovery

This paper describes the family impact of having a loved one with an alcohol or other drug use (AOD) problem and/or mental health (MH) problem, with a focus on identity. The "Family Empowerment Village Programme" is outlined. The findings of a longitudinal study will be discussed that examines the relationship between identity and concepts associated with recovery.

Session #43: Paper / Thursday, July 21, 11:15-11:45 AM / Whitney (301)

Vivien Burr, Massimo Giliberto, & Trevor Butt

"Walking like an Italian, Speaking like an English Person": Construing the Cultural Other and the Self

We report on preliminary research findings using PCP methods to explore cross-cultural perceptions. In this research, we explore how English and Italian people construe themselves and each other.

Session #38: Paper / Wednesday, July 20, 4:15-4:45 PM / Perry (303)

Sabrina Cipolletta

At First Hand: How We Get in Touch with Each Other

Departing from different theoretical perspectives like PCP, systemic theory and phenomenology, this workshop focuses on the presence, understood as the acted and embodied subjectivity in the relationship. Its implications in terms of openness, honesty and co-responsibility in different health care practices are explored.

Session #24: Workshop / Wednesday, July 20, 11:15 AM-12:30 PM / Perry (303)

Susan Cook & Karen Krupar

Understanding Academic Collaboration: A Comparative Methods Study Contrasting Survey Methods with PCP

Successful collaboration requires minimally two willing and competent participants. Academic collaboration may fail when individuals construe this process differently. This study examined collaboration first using online survey methods. The second phase involved FTF repertory grid interviews using selected literature-based elements. Comparing the results offers significant insights regarding collaboration and suggests methodological strengths and weaknesses.

Session #57: Paper / Friday, July 22, 2:00-2:30 PM / Whitney (301)

Gloria Dada Sánchez, Guillem Feixas, Eugénia Ribeiro, & Joana Senra

Working with Cognitive Conflicts: A Manualized Proposal

This study explores the differences between depressive patients and controls in terms of cognitive conflicts (dilemmas), and investigates whether the importance of these conflicts varies depending on the type of depression (dysthymic vs. major depressive disorder), and whether a greater presence of conflicts is associated with symptom severity and chronicity.

Session #55: Workshop / Friday, July 22, 11:15 AM-12:30 PM / Washington (302)

Gloria Dada Sánchez, Guillem Feixas, José Soriano, & Marta Salla

Construction of Self and Others, Cognitive Conflicts and Differentiation in Eating Disorders

This study explores the differences between eating disordered (ED) patients and controls in terms of construction of self and others (especially of their parents), differentiation and cognitive conflicts. Considering only ED patients, we studied the relations between cognitive measures derived from the repertory grid technique and severity of ED symptoms.

Session #36: Paper / Wednesday, July 20, 4:15-4:45 PM / Whitney (301)

Gloria Dada Sánchez, Adrián Montesano, Adrian Chaurand, Marta Oporto, & Guillem Feixas

Cognitive Conflicts in Unipolar Depression: A Repertory Grid Study

This study explores the differences between depressive patients and controls in terms of cognitive conflicts (dilemmas). It investigates whether the importance of these conflicts varies depending on the type of depression (dysthymic vs. major depressive disorder), and whether a greater presence of conflicts is associated with symptom severity and chronicity.

Session #46: Paper / Thursday, July 21, 12:00-12:30 PM / Whitney (301)

Donald J. Domenici & Amberly R. Panepinto

Making Meaning While Making the Grade: Student Development Theory and Personal Construct Psychology

Baxter Magolda (2009) developed a holistic framework for college student development, emphasizing the importance of meaning making. The current paper will examine Baxter Magolda's framework using a Personal Construct Psychology lens. Case examples will be included to elucidate aspects of a PCP-informed approach to student development.

Session #13: Paper / Tuesday, July 19, 2:00-2:30 PM / Bowditch (304) / .5 CE

Jay S. Efran, Sheila McNamee, & Bill Warren
Moderator: Jonathan D. Raskin

Personal Construct Psychology, Radical Constructivism, and Social Constructionism—Points of Contact and Divergence

Jay S. Efran, Sheila McNamee, and Bill Warren will engage in an unstructured discussion about these three major varieties of constructivism, with Efran representing radical constructivism, McNamee social constructionism, and Warren personal construct psychology.

Session #18: Discussion Panel / Wednesday, July 20, 8:45-10:15 AM / Perry (303)

Marcos Pereira Estellita Lins & Angela Cristina Moreira da Silva

Reconciling Quantitative and Qualitative Research when Structuring Complex Societal Problems—A Cognitive Mapping Constructivist Approach

Coherence and consistency driven methodologies required for decision making in public policies lack real world subjective modeling properties. These should account for multiple perspectives and multiple conflicting objectives. We used cognitive mapping and concept maps under a cognitivist dialogical approach to help finding meaningful connections under different contexts.

Session #12: Paper / Tuesday, July 19, 2:00-2:30 PM / Washington (302)

Rebecca Ezechukwu

Experiential Personal Construct Psychology, Reverence, and the Paradoxes of Adolescence

See Larry M. Leitner, Jeffrey Schweitzer, & Rebecca Ezechukwu
Transpersonal Issues in Experiential Personal Construct Psychology

Session #4: Paper / Tuesday, July 19, 10:30-11:45 AM / Perry (303)

Miroslav Filip

George Kelly meets Georg Rasch: Specific Objectivity as a Fundamental Epistemic, Scientific and Psychological Principle

Following the metaphor man-the scientist one could argue that personal and scientific constructs should have the same nature. The paper tries to specify a common feature of both entities. It concludes that Rasch's idea of objective comparisons as a measurement principle can be identified in personal construing as well.

Session #8: Paper / Tuesday, July 19, 12:00-12:30 PM / Whitney (301)

Miroslav Filip, Marie Kovarova, Hana Prikrylova Kucerova, & Radovan Prikryl

Verbal and Non-Verbal Construct Systems in Schizophrenia: An Empirical Study

The paper presents results of a clinical study comparing schizophrenic patients with control groups. Respondents were compared in levels of loosening, integration and differentiation of construct systems. These levels were determined both for verbal and for non-verbal levels of construct systems.

Session #20: Paper / Wednesday, July 20, 10:30-11:00 AM / Washington (302)

John M. Fisher

What Makes a Good, Safe Road Gang?

This paper explores work carried out using repertory grids in order to identify common themes and perceptions that may differentiate the better performing operational staff who dig holes to repair and replace water pipes in the Utility industry from those with a poor history of service strikes and safety incidences.

Session #59: Paper / Friday, July 22, 2:00-2:30 PM / Perry (303)

Jerald R. Forster

Amalgamating Constructivist Psychology with Positive Psychology

This paper describes how a long-time constructivist psychology practitioner, who recognizes the benefits of positive psychology, constructed new practices combining the best of each approach. By selecting better aspects and minimizing problematic aspects of each, the author describes an amalgamation that allows participants to articulate their positive personal identities.

Session #47: Paper / Thursday, July 21, 12:00-12:30 PM / Perry (303)

Jerald R. Forster

Constructing Strengths-Focused Relationships

After hearing key definitions and a rationale, participants will sample three steps of a process designed to build strengths-focused relationships. They will (1) articulate strengths; (2) pair up and share their self-articulated strengths with the other; and (3) attempt to recognize and acknowledge the other's strengths.

Session #35: Workshop / Wednesday, July 20, 3:00-4:45 PM / Bowditch (304) / 1 CE

Roy N. Freed

A Non-Academician's Exploring the Evolution-Created Mind's Mechanism Unmasked Him as a Confirmed Constructivist

This presentation explains functionally constructivism's view that each mind's inherent subjectivity derives its "realism" in interpreting its information signal inputs from the environment. It also describes subjectivity's personal and collective social implications through inducing polarizing argumentation needed for social advancement and suggests how to control that subjectivity.

Session #45: Paper / Thursday, July 21, 11:15-11:45 AM / Perry (303)

Jesús Garcia-Martínez, Rosario Antequera-Jurado, Carmen Tovar-Sánchez, Julio Antonio Guija-Vila, M^a Dolores Franco-Fernández, Ana Belén Médico Forense Ordoñez-de-Haro, José Dolores Llanes-Castilla, & Dolores Muñoz-Carrasco

Cognitive Complexity and Personal Identity in Women that Report Gender Violence

The paper describes the cognitive structure of women who report gender violence in the legal system. Grid technique was used. Women showed high cognitive complexity, but their self-definition was more operative during maltreatment than after separation.

Session #32: Paper / Wednesday, July 20, 2:45-3:15 PM / Perry (303)

Jesús Garcia-Martínez, M^a Carmen Orellana-Ramírez, & Rafael Guerrero-Gomez

New Measures of Grid: Relative Contribution as an Indicator of Therapeutic Change

A new variable of therapeutic change sensibility as measured by the repertory grid is proposed. It is based on the absolute or relative contribution of current-self elements. The main working hypothesis is that the higher the contribution, the higher the definition of current-self. Using a post-treatment study, changes in efficacy could be detected.

Session #40: Paper / Thursday, July 21, 10:30-11:00 AM / Whitney (301)



Martyna Gorska

Storytelling in Brand Creation: Verbal and Visual Narration in the Reception of Print Advertisements

The idea of narration occurs in literature and movies, but also in print advertisement slogans (verbal narration) and pictures (visual narration). The proportion of narration on visual and verbal levels impacts the comprehensibility of advertising (puzzle effect). There is an ideal relationship between these two factors when it comes to an advertisement's effectiveness.

Session #52: Posters / Friday, July 22, 10:30 AM-12:30 PM / Perry (303)

Gloria Margarita Gurrola Peña, Patricia Balcázar Nava, Alejandra Moysén Chimal, & Martha Patricia Bonilla Muñoz

Building of the Self in Depressed Patients

Application of Kelly's repertory grid to explore the construction patterns of the self that depressed patients present.

Session #52: Posters / Friday, July 22, 10:30 AM-12:30 PM / Perry (303)

Gloria Margarita Gurrola Peña, José Antonio Virseda Heras, Patricia Balcázar Nava & Julieta Garay López

What is the Dilemma of Women in Domestic Violence?

The dilemmatic constructs of 4 groups of women in different situations were surveyed through grid technique.

Session #52: Posters / Friday, July 22, 10:30 AM-12:30 PM / Perry (303)

Katherine Hayes

Therapy and Authorship: Interdisciplinary Implications for the Concept of the Co-constructed Narrative Self

Constructivist therapists have become familiar with the process of using story as a borrowed metaphor from the humanities to better understand human experience. In this paper, additional humanities theories such as intertextuality, reader response and narrativity are discussed in their relationship to the therapy relationship and sociocultural dimensions of distress.

Session #50: Paper / Friday, July 22, 10:30-11:00 AM / Whitney (301)

Hubert Hermans

Dialogical Self Theory: Positioning and Counter-Positioning in a Globalizing Society

Dialogical Self Theory is a recent development in the field of constructivist psychology. In this presentation, the main tenets and content of the theory will be exposed, empirical evidence will be given and implications for emotion and motivation will be discussed.

Session #1: Keynote / Tuesday, July 19, 8:45-10:15 AM / Perry (302) / 1 CE

Agnieszka Hermans-Konopka & Ton Voogt

Stage Model of Work with Emotions

This workshop will provide an overview of Dialogical View on Emotions (Hermans & Hermans-Konopka, 2010) and a Stage Model of work with Emotions (Hermans & Hermans-Konopka, 2010) which can be applied in psychotherapy, coaching, training and education. Included is a discussion on the role of art in emotional change, followed by applications of the presented model.

Session #21: Workshop / Wednesday, July 20, 10:30 AM-12:30 PM / Bowditch (304) / 2 CE

Allan Hunter

Archetypes in 3000 Years of Western Literature: An Under-Regarded Way of Making Meaning

Literature has always been a way for people to reflect upon who they are and what they value. Within 3000 years of western literature we can identify six specific archetypes—always the same six, always in the same order, always centered on the same issues. Is this a deep structure of the psyche?

Session #31: Paper / Wednesday, July 20, 2:45-3:15 PM / Whitney (301)

Hideaki Imai & Larry M. Leitner

Death Acceptance Through A Constructivist Perspective

When George Kelly states that death threatens four core constructs, what is the relation between death-acceptance and our intimate relationships in which we expose our core constructs? We argue that those who choose to accept death invest into their intimate relationships deeper than before their death-acceptance.

Session #33: Paper / Wednesday, July 20, 3:30-4:00 PM / Whitney (301)

Dawn Johnston & Jared French

Rogers' Core Conditions and the Therapeutic Alliance: A Social Constructionist Perspective

We present a social constructionist perspective of the therapeutic alliance by (a) re-examining Carl Rogers' core therapeutic conditions, and (b) by highlighting the contributions of both therapist and client in the co-creation of the alliance. A discourse analysis of a clinical case is used to demonstrate these ideas.

Session #9: Paper / Tuesday, July 19, 12:00-12:30 PM / Washington (302)

Sharalyn Jordan

Dialogically Queer: The Narrative Negotiation of Transgressive Genders and Sexualities

Conducting research with Queer/LGBT communities risks essentializing; Yet, applying Queer Theory's *performativity* risks undermining agency, overlooking creative resistance and overtextualizing human lives. Using examples from research with Queer/LGBT migrants, I demonstrate ways that Dialogical Self Theory navigates these risks, allowing researchers to convey the meaningful, agentic and contested in Queer lives.

Session #56: Paper / Friday, July 22, 12:00-12:30 PM / Whitney (301)

Melissa Karnaze

Cultivating Compassion: Investigating the Link Between Cognitive Reappraisal and Structural Differentiation in the Repertory Grid

Empirical research suggests cognitive reappraisal is an effective emotion regulation strategy, with practical implications for compassion and resilience. This presentation summarizes the current status of a master's thesis project that will investigate the potential link between cognitive reappraisal and structural differentiation as measured by the repertory grid technique.

Session #41: Paper / Thursday, July 21, 10:30-11:00 AM / Washington (302)



Ellyn Kaschak

The Mattering Map

Contextual theory and practice (Kaschak, 1992) offers a multi-dimensional and dynamic social constructivist approach to the understanding of human psychological functioning that is more intimately related to 21st century physics than to 19th and 20th centuries reductionistic and fragmenting models of assessment or treatment. The Mattering Map is the model for this approach. As much as matter is a sine qua non of our material existence, so is mattering of our psychological, spiritual and cultural aspects. In this presentation, I will introduce the mattering map, discuss its compatibility with other emerging fields such as genetics and neurology and explain its uses and applications.

Session #39: Keynote / Thursday, July 21, 8:45-10:15 AM / Perry (303)

Larry M. Leitner and Others

Miller Mair: A Remembrance

The great constructivist and humanist scholar Miller Mair recently died. This symposium will honor our mentor, colleague, and friend through a series of papers and remembrances. Scholars from Australia, Europe, Israel, and the United states will talk about Miller's work as well as his humanity.

Session #16: Symposium / Tuesday, July 19, 3:30-4:30 PM / Perry (303)

Larry M. Leitner, Jeffrey Schweitzer, & Rebecca Ezechukwu

Transpersonal Issues in Experiential Personal Construct Psychology

Recently, experiential personal construct psychology has begun to be elaborated into the areas of transpersonal reverence and responsibility. These papers continue this elaboration by focusing on some of the implications of transpersonal reverence for certain specific areas of psychology (adolescence and pastoral work). The papers to be presented are:

Jeffrey Schweitzer

A Narrative Approach to Religious Calling: Honoring the More-Than-Human

Rebecca Ezechukwu

Experiential Personal Construct Psychology, Reverence, and the Paradoxes of Adolescence

Session #4: Symposium / Tuesday, July 19, 10:30-11:45 AM / Perry (303)



Judith Lombardi

What's so Radical about Radical Constructivism?

Who was Ernst von Glasersfeld? Why did he invent the term Radical Constructivism? In what ways might Radical Constructivism be relevant to the discipline of psychology? I will use excerpts from video interviews with Ernst von Glasersfeld over the past decade to address these questions.

Session #28: Workshop / Wednesday, July 20, 2:00-3:15 PM / Washington (302)

Julia R. Lonoff, Joel Gaffney, & Larry M. Leitner

Understanding Childhood Trauma: An Experiential Personal Construct Psychology Exploration of Developmental/Structural Arrest

Experiential Personal Construct Psychology suggests that during childhood we develop foundational relational constructs necessary for forming meaningful relationships later in life. Experiencing trauma may freeze the child's meaning-making process, halting development, and resulting in a *developmental/structural arrest*. We elaborate the concept of developmental/structural arrest, focusing on development and implications for understanding human struggles.

Session #26: Paper / Wednesday, July 20, 12:00-12:30 PM / Washington (302)

Michael F. Mascolo

What is Sexual Desire a Desire For? A Developmental Analysis

What is sexual desire a desire for? Some might say that the object of sexual desire is orgasm and the experience of pleasurable sensations. However, if this were so, there would be no need for sexual partners. Sexual desire is a desire for union with another person who is experienced as an embodied consciousness. This paper examines the ways in which the experience of sexual desire develops toward this end over adulthood.

Session #22: Paper / Wednesday, July 20, 11:15-11:45 AM / Whitney (301)

Spencer A. McWilliams

Apparently Effortless Effectiveness: Fay Fransella's Passionate Productivity and Marvelous Mentoring

See David Winter, Beverly Walker, Spencer A. McWilliams, & Jörn Scheer:
Remembering the Life and Work of Fay Fransella

Session #49: Symposium / Friday, July 22, 8:45-10:15 AM / Perry (303)

Spencer A. McWilliams

Embracing Fading Truths: Reaffirming a Process Ontology

Scientifically established effects fade over time, leading many to question research methods and publication processes. An alternative explanation might use Kelly's description of the universe as integral and constantly changing, and Buddhist views of interdependence, impermanence, and lack of inherent essence, for an ontology emphasizing the ever-changing nature of phenomena.

Session #7: Paper / Tuesday, July 19, 11:15-11:45 AM / Washington (302)

Robert A. Neimeyer & Scott Johnson

Grief and Trauma After Violence

Robert A. Neimeyer and Scott Johnson will have a one-on-one conversation about grief and trauma following violent incidents. Dr. Neimeyer is a leading theorist and practitioner in the area of grief and loss, while Dr. Johnson was deeply involved in helping his campus community deal with the aftermath of the 2007 mass-shootings at Virginia Tech University.

Session #17: Discussion Session / Tuesday, July 19, 4:45-6:00 PM / Perry (303)

Gail Noppe-Brandon

Alia: A Black and White Case of Narrative Reconstruction

Through the case study of "Alia," a 33 year old woman of mixed race who initially sought treatment for "writer's block," the presenter will demonstrate the blended use of narrative, coherence, and personal construct therapies to open the block and thereby reveal and redress the crisis of identity embedded within.

Session #51: Paper / Friday, July 22, 10:30-11:00 AM / Washington (302)

Marie-Louise Österlind

Spiders Caught Up by the Web—Social Care Managers Reflect Over Their Work Situation

This paper highlights the daily working life of first-level managers in a Swedish municipal social care administration, seen from their perspective. The discussion raises new questions about municipal managers' ability and possibility to handle ideals and requirements which are difficult to consolidate particularly in times of resource scarcity.

Session #54: Paper / Friday, July 22, 11:15-11:45 AM / Whitney (301)

Mark Paris

Critiquing the Fit Between Constructs and Reality

This paper looks at how Kelly's notion that constructs are attempts to "fit" reality makes a critical understanding of how our constructs fit imperative for both therapists and the therapeutic process. I use both pragmatism and Foucault to elaborate what this kind of critical understanding looks like.

Session #34: Paper / Wednesday, July 20, 3:30-4:00 PM / Washington (302)

Agata Pasikowska

Changes in Self While Playing an Online Game

The game world allows players the freedom to create successful online selves. This study examined the impact of playing an online multiplayer game (World of Warcraft) on self-positions. A dialogue between person and online alter ego was predicted. Creating and having success with an online avatar was expected to influence ratings of online self (alter ego) and real self. The impact depended on initial qualities of self (self-esteem, stability of self, and received social support). The study shows that the online environment is an ideal place to shape narratives or stories of self, which can be used therapeutically.

Session #52: Posters / Friday, July 22, 10:30 AM-12:30 PM / Perry (303)



Anthony Pavlo & Larry M. Leitner

Construing Psychosis: A Constructivist, Existential-Phenomenological and Psychoanalytic Account

This presentation will provide an understanding of psychosis based in constructivism, existential-phenomenology, and psychoanalysis. Along with providing such an understanding, we will evaluate the theoretical and practical implications of incorporating existential-phenomenological and psychoanalytic theories and research findings with constructivist thought.

Session #58: Paper / Friday, July 22, 2:00-2:30 PM / Washington (302)

Harry Procter

Interviewing Skills: Using Relational Constructs, Levels of Interpersonal Construing and Qualitative Grids

This workshop will be a chance to increase our understanding of human relationships and interactions. It will present developments in PCP that focus on interpersonal relationships and allow participants to hone and enrich their interviewing skills by utilizing a variety of methods developed in work with individuals, families and organizations.

Session #5: Workshop / Tuesday, July 19, 10:30-11:45 AM / Bowditch (304) / 1 CE

Harry Procter

PCP and the Categorical Philosophers: Kant, Hegel and Peirce

This workshop will explore the fascinating ideas of the philosopher Charles Peirce in whose work can be found many of the basic assumptions and values of PCP. Peirce's three categories and his notion of Signs will be used to throw light on PCP and extend our understanding of Relational Construing.

Session #44: Workshop / Thursday, July 21, 11:15 AM-12:30 PM / Washington (302)



Olga Pucurull, Guillem Feixas, María del Carmen Aguilera, & María Jesús Carrera

What Changes in the Personal Construct System During Psychotherapy? A Naturalistic Study of Brief Construct Therapy

Using the repertory grid, we studied changes in the personal construct systems of 107 patients treated in the public health system by advanced students in a constructivist oriented training program.

Session #27: Paper / Wednesday, July 20, 2:00-2:30 PM / Whitney (301)

Jonathan D. Raskin & Benjamin L. Brett

Stigma and the Reverse Golden Section among Counselors

Stigma was examined using the reverse golden section. College students rated homeless and mentally ill identities using the reverse golden section in which negative to positive adjectives are assigned in a roughly 62:38 ratio. Counselors, however, did not rate these identities using a reverse golden section, suggesting they do not regard them in a stigmatized manner. Implications for counselor training will be discussed.

Session #19: Paper / Wednesday, July 20, 10:30-11:00 AM / Whitney (301)

Emily Reese & Larry M. Leitner

Hearing Voices: Mental Illness or Alternative Experience?

The phenomenon of hearing voices that no one else can hear often is construed as a symptom of mental illness in Western culture. However, many other cultures and groups hold that hearing voices is not necessarily a sign of pathology. This paper will explore these different constructions.

Session #10: Paper / Tuesday, July 19, 12:00-12:30 PM / Perry (303)

Jörn Scheer

Finished and Unfinished Business—The Legacy of Fay Fransella

See David Winter, Beverly Walker, Spencer A. McWilliams, & Jörn Scheer:
Remembering the Life and Work of Fay Fransella

Session #49: Symposium / Friday, July 22, 8:45-10:15 AM / Perry (303)



Jeffrey Schweitzer

A Narrative Approach to Religious Calling: Honoring the More-Than-Human

See Larry M. Leitner, Jeffrey Schweitzer, & Rebecca Ezechukwu
Transpersonal Issues in Experiential Personal Construct Psychology

Session #4: Paper / Tuesday, July 19, 10:30-11:45 / Perry (303)

Jeffrey R. Schweitzer

Re-membering the Dead: Constructivist and Archetypal Perspectives on Grief and Mourning

First, I will review and critique traditional models of grief and mourning that prescribe a relinquishment of bonds with the dead. Next, I will introduce as an alternative a continuing bonds perspective and highlight its meaningful implications for the bereaved. Third, I will demonstrate how continuing bonds are supported by constructivist and archetypal approaches to grief and mourning. Last, I will examine how constructivist and archetypal theories can radically alter our traditional conceptions of recovery.

Session #29: Paper / Wednesday, July 20, 2:00-2:30 PM / Perry (303)

Krista Socholotiuk & Dawn Johnston

A Constructivist Model of Clinical Supervision

This presentation will describe how the assumptions of constructivist psychotherapy inform (a) supervision goals; (b) understanding of the supervisee's professional learning, development and change; (c) the role of the supervisor; (d) supervisory interventions and strategies; and (e) considerations of multiculturalism and diversity, when supervision is practiced from the seven-eyed process model.

Session #15: Paper / Tuesday, July 19, 2:45-3:15 PM / Perry (303)

Tom Strong

Conceptually Upstream: Revisiting Old Tributaries of Thought for "New" Constructivist Ideas and Practices

Contemporary constructivism's ideas and practices have been selectively drawn from rich traditions of thought. Drawing from *Social Constructionism: Sources and Stirrings in Theory and Practice* (Cambridge University Press and co-authored with Andy Lock), I revisit phenomenological, hermeneutic and discursive traditions for some seldom considered ideas about therapeutic practice and some research conundrums.

Session #3: Paper / Tuesday, July 19, 10:30-11:00 AM / Washington (302)

Tom Strong, Joaquín Gaete Silva, Ines Sametband, Jared French, Tanya Mudry, & Emily Doyle

Conversational Identity-Work and Discourses of Recovery

We share findings from an action research project wherein five self-identified recovering problem gamblers participated in recovery-oriented conversations with us over the course of year. We were interested in the discourses they turned to in describing their recovery and in accounting for a changing sense of self where this occurred.

Session #11: Case Presentation / Tuesday, July 19, 2:00-3:15 PM / Whitney (301)

Jill C. Thomas

An EPCP Understanding of Internet Pornography Addiction: Relationships and Dependency in the Age of the Internet

Problematic sexual internet use is often explained by some combination of unique features of the internet and user characteristics. A disease model of addiction is also often used. Constructivist non-disease models are explored here with a focus on an EPCP diagnostic conceptualization of internet pornography addiction.

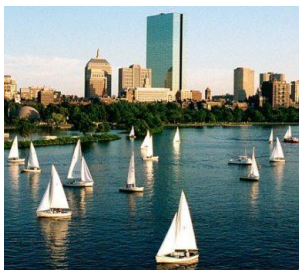
Session #48: Paper / Thursday, July 21, 12:00-12:30 PM / Bowditch (304) / .5 CE

Finn Tschudi & Magni Martens

A Constructivist Approach to Grid Studies

This paper outlines an approach to studying whether there is one or whether there are several patterns of grids in a group of persons. Conditions for relying on the mean grid are described. A shared pattern may be dysfunctional as illustrated for Swedish auditors. Methods for bringing forth alternative constructions are discussed

Session #2: Paper / Tuesday, July 19, 10:30-11:00 AM / Whitney (301)



Arlene C. Vadum

Performance and Personal Change: Using Concepts from Fixed Role Therapy to Improve Communication Skills

This presentation describes a project in which college students create and enact new social roles in their daily lives for personal development. The project supports Kelly's (1955) assertion that "even the most obvious occurrences of everyday life might appear utterly transformed if we were inventive enough to construe them differently."

Session #30: Workshop / Wednesday, July 20, 2:00-3:15 PM / Bowditch (304) / 1 CE

Ton Voogt & Agnieszka Hermans-Konopka

Dialogical Self Theory as a Basis for New Methods in Management Development

This workshop will explore management development from the perspective of Dialogical Self Theory (Hermans, 2001) and will demonstrate how professionals can profit from this theory. The concept of promoter position (Valsiner, 2004, Hermans & Hermans-Konopka, 2010) and its application will be introduced in the context of relation between social and personal positions.

Session #53: Workshop / Friday, July 22, 10:30 AM-12:30 PM / Bowditch (304) / 2 CE

Beverly Walker

Encouraging Inquiring Men and Women: Teaching, Windsurfing and Duck a l'Orange

See David Winter, Beverly Walker, Spencer A. McWilliams, & Jörn Scheer:
Remembering the Life and Work of Fay Fransella

Session #49: Symposium / Friday, July 22, 8:45-10:15 AM / Perry (303)

Kristian David Weihs

Voices Lost, Voices Found: George Kelly at the Old Saybrook Conference

At 10:30 AM on Saturday, November 29, 1964, George Kelly presented his apt titled paper, "The Threat of Aggression" at the Old Saybrook Conference. Besides the published version, little is known about his actual speech or its reception. With recourse to recently unearthed archival materials, this multimedia presentation promises partial remedy.

Session #14: Paper / Tuesday, July 19, 2:45-3:15 PM / Washington (302)

David Winter

Personal Construct Psychology as a Way of Life

See David Winter, Beverly Walker, Spencer A. McWilliams, & Jörn Scheer:
Remembering the Life and Work of Fay Fransella

Session #49: Symposium / Friday, July 22, 8:45-10:15 AM / Perry (303)

David Winter, Nick Reed, Joan-Miquel Soldevilla, Duygu Kuzu, & Esther Aslan

An Exemplary Life? Analyzing the Autobiography of the Commandant of Auschwitz, Using PCP Methods

This paper describes an analysis of the autobiography of Rudolf Hoess, the Commandant of Auschwitz. The analysis was undertaken using the "Textual Grid" method and by treating the autobiography as if it were a self-characterization. The textual grid was analyzed in novel ways and these are also described.

Session #23: Paper / Wednesday, July 20, 11:15-11:45 AM / Washington (302)

David Winter, Beverly Walker, Spencer A. McWilliams, & Jörn Scheer

Remembering the Life and Work of Fay Fransella

Professor Fay Fransella, who died on January 14, 2011, passionately devoted much of her life to the promotion of personal construct psychology. This included developing the idea for international PCP congresses and founding the first center solely devoted to this approach. This symposium will celebrate her life and work with the following presentations:

Beverly Walker

Encouraging Inquiring Men and Women: Teaching, Windsurfing and Duck a l'Orange

Spencer A. McWilliams

Apparently Effortless Effectiveness: Fay Fransella's Passionate Productivity and Marvelous Mentoring

Jörn Scheer

Finished and Unfinished Business—The Legacy of Fay Fransella

Session #49: Symposium / Friday, July 22, 8:45-10:15 AM / Perry (303)

POST-CONGRESS DIALOGICAL APPROACH WORKSHOP

This workshop on July 23 will provide an overview of applications of Dialogical Self Theory in coaching, counseling, training and education (Dialogical Self Approach) with special attention to the newest developments. Participants will learn about basic theoretical framework of Dialogical Self Theory and the following methods based on this theory: Personal Position Repertoire, Emotional Coaching, and Composition Work. They will also learn how the basic concepts of the theory can be easily applicable in practice (e.g. dialogue, work with a future position). Included is the demonstration of how the research in the field of Dialogical Self Theory can enrich the practice and lead to the further developments of existing methods. *Psychologists who complete this workshop will receive 6 CE credits.*

Attendees who have not registered in advance for this workshop can do so while at the congress. Cost is \$250. See the Congress Registration Desk for details.

CONTRIBUTORS: Hubert Hermans, Agnieszka Hermans-Konopka, Ton Voogt, Jack Kahn, & Jamie Coy

ABOUT BOSTON

The material below is from <http://www.bostonusa.com/visit/bostonbyseason/>

BOSTON IN THE SUMMER

Summer is a great time to explore Boston, Massachusetts. Affectionately known as "America's Walking City," You can stroll the city's sidewalks, wander its abundance of green parks, or just people-watch at one of the many outdoor cafes.

Don't miss the Boston Pops when they ring in the season with the 4th of July celebration on the Charles River Esplanade. Shoppers will love Boston's Faneuil Hall Marketplace and the high-end boutiques on Newbury Street. For sports fans, catching a Red Sox game at Fenway Park is a must when you're in Massachusetts.

North of Boston and on Cape Cod, picturesque New England beaches are frequented by locals and visitors alike, and the colonial towns hum with the bustle of eager explorers.

When the sun goes down, ideal temperatures make for a hot nightlife in the city's restaurants, bars and clubs.

That's Boston in the summertime. The city at its best and brightest with plenty of summer deals to help you do it on a budget!

SUMMER WEATHER

In July, the monthly average high temperature is 82° F (28° C). The monthly low temperature is 66° F (19° C). Average rainfall in July is 3 inches.

WHAT TO WEAR

Bostonians dress smartly and simply. Prepare for hot and humid days and cool nights.

DAY: If you're touring, wear comfortable sneakers or sandals for walking. Shorts and T-shirts are common. Bring sunglasses or a hat. Most tourist venues don't have dress codes, but check to be sure.

EVENING: Consider your agenda; the theater tends to be dressier and some upscale restaurants require jackets.



THE JOHN HANCOCK HOTEL & CONFERENCE CENTER'S TOP 12 THINGS TO DO IN BOSTON

Situated just a few steps from the heart of Boston, we are within walking distance to many of the finest attractions Boston has to offer.

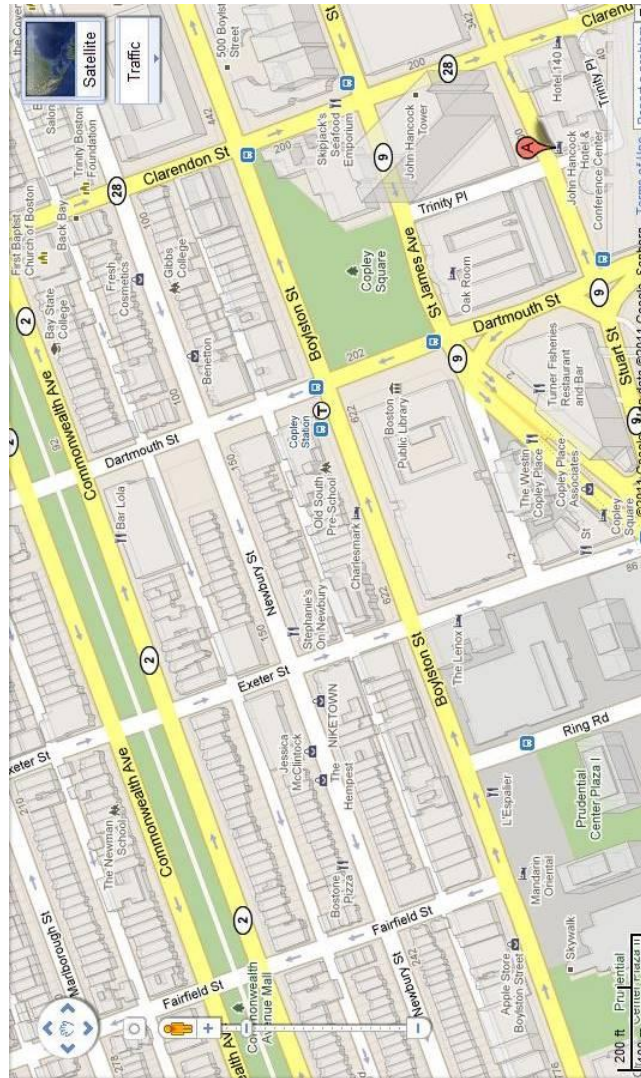
With so many things to choose from, we have narrowed the list down to our favorite things to do in Boston:

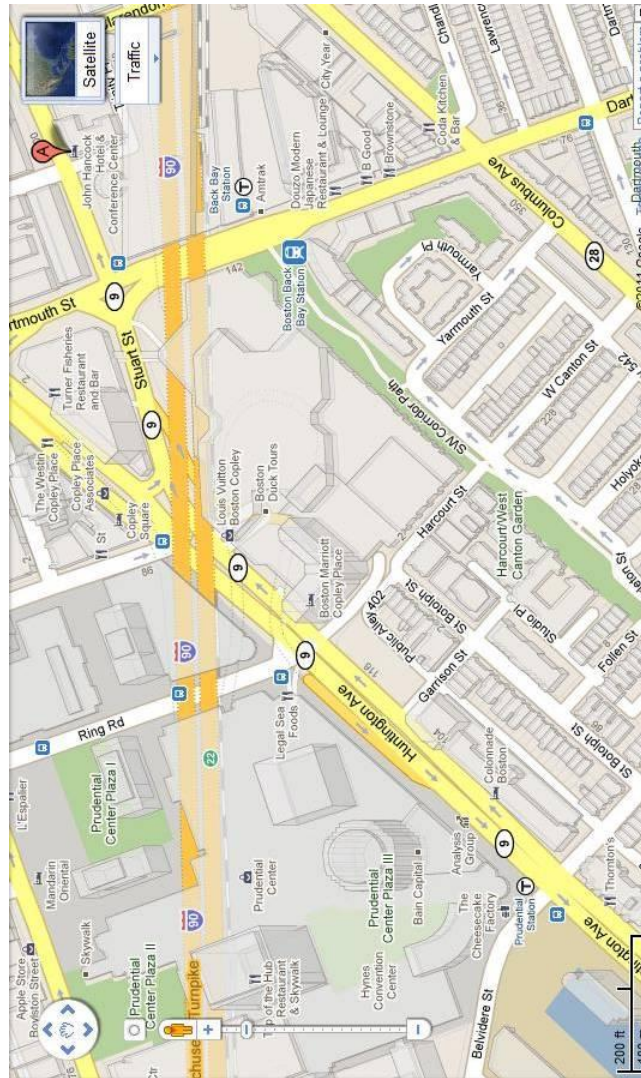
1. **WALK THE FREEDOM TRAIL** - If you have time to do just one fun thing together in Boston, we recommend walking the Freedom Trail. A self-guided, 2.5 mile-long trail that meanders through the oldest part in Boston, it leads you past the cities 16 most important historical sites and acquaints you with the role Boston played in American freedom.
2. **GRAZE IN THE BOSTON PUBLIC GARDEN** - The Freedom Trail begins in the Boston Common, the oldest park in America – but that doesn't mean that you have to rush through it. This pretty greensward, designed by Frederick Law Olmsted, can get crowded on fine weather weekends but that makes people watching part of the fun. You may want to forgo the swan boats on the lake in the Public Garden, a magnet for families to air their infants and toddlers. The Boylston Street T Station (subway stop) at the south end of the Common will put you on the fast track to more Boston fun.
3. **VISIT THE ORIGINAL CHEERS BAR** – See the original Boston pub that inspired the setting of the hit television show "Cheers." Previously known as the Bull and Finch Pub, the original Cheers is located on Beacon Street on edge of the Boston Commons.
4. **ADMIRE ART AT THE ISABELLA STEWART GARDENER MUSEUM** – Designed as an Italianate Villa with a central courtyard, the home that once belonged to art collector Isabella Stewart Gardner is now a museum open to the public. Due to Gardner's enormous wealth, she was able to accumulate paintings and sculptures from around the world. Unlike the exhibitions one often finds in public museums, the items in Gardner's collection are from different eras, places, and styles, often displayed together in one room.
5. **ALL ABOARD! VISIT THE USS CONSTITUTION** - "Old Ironsides," which operated mainly during the war of 1812, is available for touring. The oldest commissioned warship afloat in the world, she last sailed in 1997 but in the mid 1800's she sailed around the world. The USS Constitution is located on a US Naval Base so be prepared to go through a security checkpoint.
6. **MAKE A RUN TO FENWAY PARK** - Home of the Boston Red Sox, Fenway Park opened in 1912 and maintains one of the last manual scoreboards in the major leagues. Behind the scenes tours are available daily, even on game days. Interested in catching a game while you are in town? Contact the front desk the John Hancock Hotel for information.

7. FANEUIL HALL AND QUINCY MARKET - A central spot for history and shopping, the Quincy Market has something for everyone. It's a major stop on the Freedom Trail, so you will see consumed interpreters and various plaques explaining the historical significance and hot spots. Surrounding these locations are two large building which house stores of all kinds. In the center you will find Quincy Market itself, crowded with eateries that offer foods from around the globe. Outside are more vendors, extra seating, and street performers. This is a great place to take the family for an afternoon.
8. SHOP TILL YOU DROP ON NEWBURY STREET OR THE ADJACENT PRUDENTIAL CENTER - There are no temperature controlled, indoor malls on Newbury Street and there are not too many bargains to be found either. But quality hounds on vacation appreciate this elegant throwback. The street retains its carriage-trade aura and features many jewelers, silversmiths, antiquaries, and intimate eateries.
9. SAIL TO BOSTON'S HARBOR ISLANDS - Part of the National Park System, there are 34 islands within Boston Harbor as close as 11 miles from downtown Boston. May through October you can visit Boston Harbor Island via ferry, shuttle, or tour boat. A fun complement to a Boston city visit, a trip to Boston Harbor Islands brings you close to both nature and history.
10. SEE IT ALL FROM BOSTON'S TOP OF THE HUB OBSERVATORY! - They say you have not seen Boston until you have seen it from the top of the Prudential Building. For a modest fee, you can take the elevator to the 50th floor and get a 360-degree view of the city from the skywalk. If you can, time your trip during a Red Sox game and bring binoculars to watch the action. Fun!
11. BOSTON'S OLD TOWN TROLLEY TOUR - Tour Boston at your own pace! Old Town Trolley Tours offer on and off privileges to make it easy to explore Boston's hottest destinations. Hop off at your favorite stops - for lunch, shopping or to experience an attraction - and then continue your sightseeing tour. Also included is a complimentary 45 minute boat tour of Boston's historic harbor.
12. BOSTON'S DUCK TOURS - You've never toured Boston in anything that comes close to Boston Duck Tours. Tours of the city are conducted in a W.W. II style amphibious landing vehicle. You'll cruise by all the places that make Boston the birthplace of freedom and a city of firsts, from the golden domed state house to Bunker Hill and the TD Banknorth Garden, Boston Common and Copley Square to the Big Dig, Government Center to fashionable Newbury Street, Quincy Market to the Prudential Center, and more. And just when you think you have seen it all, there's more. It's time for "Splashdown" as you splash your DUCK right into the Charles River for a breathtaking view of the Boston and Cambridge skylines.

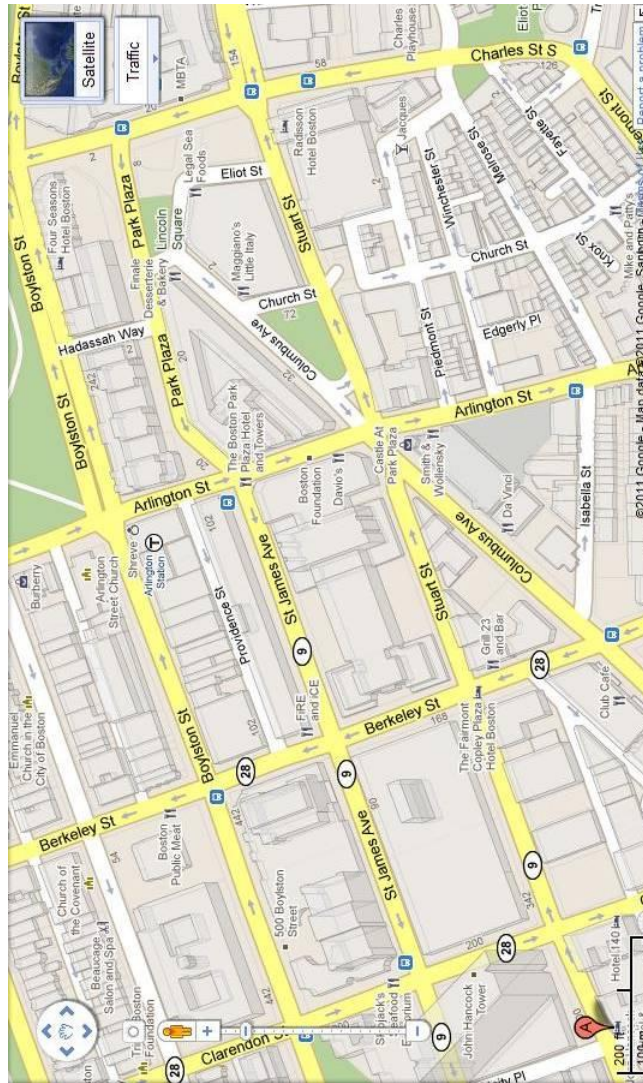
MAPS

The pages that follow contain maps of the areas surrounding the John Hancock Hotel & Congress Center. The Letter A indicates the location of the conference center.









NEARBY RESTAURANTS

These restaurants are all within walking distance of the JH Hotel & Conference Center.		
Armani Café 214 Newbury Street . 2 mile	Atlantic Fish Co. 761 Boylston Street . 2 mile	Abe & Louie's 793 Boylston Street . 3 mile
Berkshire Grill 111 Huntington Ave . 2 mile	Brasserie Jo 120 Huntington Ave . 3 mile	Cottonwood Café 222 Berkeley St . 2 mile
Ciao Bella 240 Newbury Street . 3 mile	Clery's Pub 113 Dartmouth Street . 2 mile	Davio's 75 Arlington Street . 2 mile
Daisy Buchanans 240 Newbury Street . 3 mile	Douzo Japanese 131 Dartmouth Street . 2 mile	Fire & Ice 31 St. James Ave . 2 mile
Firefly 130 Dartmouth Street . 2 mile	Grill 23 161 Berkeley Street . 1 mile	Legal Seafoods 100 Huntington Street . 2 mile
Maggiano's Restaurant 4 Columbus Avenue . 4 mile	McCormick & Schmick's 34 Columbus Ave . 4 mile	Osushi 10 Huntington Street . 1 mile
Palm Restaurant 200 Dartmouth Street . 1 mile	Papa Razzi 271 Dartmouth Street . 1 mile	Rattlesnake 384 Boylston Street . 2 mile
Saffron 399 Boylston Street . 2 mile	Skipjack's Restaurant 199 Clarendon Street . 1 miles	Stephanie's on Newbury 190 Newbury Street . 2 mile
Stix 35 Stanhope Street . 1 mile	Thai Basil 132 Newbury Street . 1 mile	Turner Fisheries 10 Huntington Avenue . 1 mile
Uno Chicago Grill 731 Boylston Street . 2 mile	Vinny T's of Boston 867 Boylston Street . 3 mile	

PRESENTERS

ALEXANDRA L. ADAME, Seattle University, USA (Session #37)
adamea@seattleu.edu

GAIL ADORNO, The Florida State University, USA (Session # 6)
gfa@fsu.edu

MARÍA DEL CARMEN AGUILERA, University of Barcelona, Spain (Session #27)
mari.aguilera@ub.edu

ROSARIO ANTEQUERA-JURADO, University of Seville, Seville, Spain (Sessions #32, 52)
raj@us.es

ESTHER ASLAN, University of Hertfordshire, UK (Session #23)
h.aslan@herts.ac.uk

PATRICIA BALCÁZAR NAVA, Autonomous University of the State of Mexico (Session #52)
pbalcazarnava@hotmail.com

MICHAEL BAMBERG, Clark University, USA (Session #60)
mbamberg@clarku.edu

ALICIA BERENGUER-MELLADO, Forensic Medical Institute, Spain (Session #52)
alicia.berenguer.ius@juntadeandalucia.es

MARTHA PATRICIA BONILLA MUÑOZ, Autonomous University of the State of Mexico (Session #52)
patyb@prodigy.net.mx

ILARIA BREGANT, Institute of Constructivist Psychology, Italy (Session #25)
ibi@interfree.it

BENJAMIN L. BRETT, State University of New York at New Paltz, USA (Session #19)
bbrett68@newpaltz.edu

SARA K. BRIDGES, The University of Memphis, USA (Session #42)
sbridges@memphis.edu

KELLIE BUCKLEY-WALKER, University of Wollongong, Australia (Session #43)
kabw01@uowmail.edu.au

CLAUDIA ROCIO BUENO CASTRO, Autonomous University of the State of Mexico (Session #52)
rociob2003@yahoo.com.mx

VIVIEN BURR, University of Huddersfield, United Kingdom (Session #38)
v.burr@hud.ac.uk

TREVOR BUTT, University of Huddersfield, United Kingdom (Session #38)
t.butt@hud.ac.uk

PETER CAPUTI, University of Wollongong, Australia (Session #43)
pcaputi@uow.edu.au

MARÍA JESÚS CARRERA, University of Barcelona, Spain (Session #27)
mcarrera@ub.edu

ADRIAN CHAURAND, University of Barcelona, Spain (Session #46)
adriann_99@hotmail.com

SABRINA CIPOLLETTA, University of Padua, Italy (Session #24)
sabrina.cipolletta@unipd.it

SUSAN COOK, Metropolitan State College of Denver, USA (Session #57)
cooks@mscd.edu

TREVOR CROWE, University of Wollongong, Australia (Session #43)
trevor_crowe@uow.edu.au

GLORIA DADA SÁNCHEZ, University of Barcelona, Spain (Sessions #36, 46, 55)
gloriadada@gmail.com

DONALD J. DOMENICI, University at Buffalo Counseling Services, USA (Session #13)
ddprime@hotmail.com

EMILY DOYLE, University of Calgary, Canada (Session #11)
edoyle@ucalgary.ca

JAY S. EFRAN, Temple University, USA (Session #18)
jay.efran@verizon.net

FRANZ R. EPTING, University of Florida, USA (Philo Café)
frepting@hotmail.com

MARCOS PEREIRA ESTELLITA LINS, Federal University of Rio de Janeiro, Brazil (Session #12)
estellita@pep.ufrj.br

REBECCA EZECHUKWU, Miami University, USA (Session #4)
ezechurn@muohio.edu

APRIL J. FAIDLEY, Flagstone Psychology, USA (Session #41)
april.faidley@gmail.com

GUILLEM FEIXAS, University of Barcelona, Spain (Sessions #27, 36, 46, 55)
gfeixas@ub.edu

MIROSLAV FILIP, Institute of Psychology—Academy of Sciences, Czech Republic (Sessions #8, 20)
filip@psu.cas.cz

JOHN M. FISHER, Training 2000 Ltd., United Kingdom (Session #59)
john.fisher@t2000.co.uk

JERALD R. FORSTER, University of Washington, USA (Sessions #35, 47)
J_forster@comcast.net

M^a DOLORES FRANCO-FERNÁNDEZ, University of Seville, Spain (Sessions #32, 52)
dfranco@us.es

ROY N. FREED, Attorney, USA (Session #45)
freedar@comcast.net

JARED FRENCH, University of Calgary, Canada (Sessions #9, 11)
jrfrench@ucalgary.ca

JOAQUÍN GAETE SILVA, University of Calgary, Canada (Session #11)
jgaetesi@ucalgary.ca

JOEL GAFFNEY, Miami University, USA (Session #26)
gaffnejs@muohio.edu

JESÚS GARCIA-MARTÍNEZ, University of Seville, Spain (Sessions #13, 32, 40, 52)
jgm@us.es

JULIETA GARAY LÓPEZ, Autonomous University of the State of Mexico (Session #52)
garayjulieta@hotmail.com

MASSIMO GILIBERTO, Institute of Constructivist Psychology, Italy (Session #25, 38)
m.giliberto@iol.it

MARTYNA GORSKA, Polish Academy of Science, Poland (Session #52)
martynagorska@gmail.com

RAFAEL GUERRERO-GOMEZ, COPSICA Psychologists and Psychology Counseling Center Cerro de Águila, Spain (Session #40)
copsica@yahoo.es

JULIO ANTONIO GUIJA-VILA, Forensic Medical Institute, Spain (Sessions #32, 52)
ulioaguija@gmail.com

GLORIA MARGARITA GURROLA PEÑA, Autonomous University of the State of Mexico (Sessions #52)
mugurrolaunid@hotmail.com

KATHERINE HAYES, Miami University, USA (Session #50)
hayeskj@muohio.edu

HUBERT HERMANS, Radboud University Nijmegen and International Institute for the Dialogical Self, The Netherlands (Session #1)
hhermans@psych.ru.nl

AGNIESZKA HERMANS-KONOPKA, International Institute for the Dialogical Self, The Netherlands (Sessions #21, 53)
agnieszka.hermans@yahoo.com

ALLAN HUNTER, Curry College, USA (Session #31)
ahunter@post03.curry.edu

HIDEAKI IMAI, Miami University, USA (Session #33)
imaih@muohio.edu

SCOTT JOHNSON, Family Therapy Center of Virginia Tech, USA (Session #17)
scottwj@vt.edu

DAWN JOHNSTON, University of British Columbia, Canada (Sessions #9, 15)
dawn.johnston@gmail.com

SHARALYN JORDAN, University of British Columbia, Canada (Session #56)
srjordan@interchange.ubc.ca

MELISSA KARNAZE, California State University San Marcos, USA (Session #41)
karna001@cougars.csusm.edu

ELLYN KASCHAK, San Jose State University, USA (Session #39)
ekaschak@sbcglobal.net

MARIE KOVAROVA, Institute of Psychology—Academy of Sciences, Czech Republic (Session #20)
144270@mail.muni.cz

KAREN KRUPAR, Metropolitan State College of Denver, USA (Session #57)
krupark@mscd.edu

DUYGU KUZU, University of Hertfordshire, UK (Session #24)

LARRY M. LEITNER, Miami University, USA (Sessions #4, 10, 16, 26, 33, 37, 58)
leitnelm@muohio.edu

JOSÉ DOLORES LLANES-CASTILLA, Forensic Medical Institute, Spain (Session #32)
josed.llanes@juntadeandalucia.es

CELIA LLOPIS-JIMÉNEZ, Forensic Medical Institute, Spain (Session #52)
cellogim@hotmail.com

JUDITH LOMBARDI, Independent Scholar and Video Ethnographer, USA (Session #28)
cyberjl@comcast.net

JULIA R. LONOFF, Miami University, USA (Session #26)
lonoffjr@muohio.edu

M^a JOSÉ LÓPEZ-ROJAS, Forensic Medical Institute, Spain (Session #52)
maoselopezrojas@hotmail.com

MAGNI MARTENS, Nofima Food, Norway (Session #2)
magni.martens@nofima.no

MICHAEL F. MASCOLO, Merrimack College, USA (Session #22)
michael_mascolo@yahoo.com

SHEILA MCNAMEE, University of New Hampshire, USA (Session #18)
sheila.mcnamee@unh.edu

SPENCER A. MCWILLIAMS, California State University San Marcos, USA (Sessions #7, 49)
smcwilli@csusm.edu

ADRIÁN MONTESANO, University of Barcelona, Spain (Session #46)
adrianmontesano@gmail.com

ANGELA CRISTINA MOREIRA DA SILVA, State University of Rio de Janeiro (Session #12)
angela@pep.ufrj.br

ALEJANDRA MOYSÉN CHIMAL, Autonomous University of the State of Mexico (Session #52)
amoysen@hotmail.com

DOLORES MUÑOZ-CARRASCO, Forensic Medical Institute, Spain (Session #32)
dolores.munoz.ius@juntadeandalucia.es

TANYA MUDRY, University of Calgary, Canada (Session #11)
mudryt@ucalgary.ca

ROBERT A. NEIMEYER, The University of Memphis, USA (Session #17)
neimeyer@memphis.edu

GAIL NOPPE-BRANDON, Find Your Voice, Inc. and Jewish Board of Family & Children's Services, NYC, USA (Session #51)
gnb@findyourvoice.us

ANA BELÉN MÉDICO FORENSE ORDOÑEZ-DE-HARO, Forensic Medical Institute, Spain (Session #32)
anab.ordonez.ius@juntadeandalucia.es

M^a CARMEN ORELLANA-RAMÍREZ, University of Seville, Spain (Session #40)
mcorellana@us.es

MARTA OPORTO, University of Barcelona, Spain (Session #46)
martaoporto86@hotmail.com

PAOLO ORLANDO, Institute of Constructivist Psychology, Italy (Session #25)
paolaorlando@msn.com

MARIE-LOUISE ÖSTERLIND, Kristianstad University, Sweden (Session #54)
marie-louise.osterlind@hkr.se

AMBERLY R. PANEPINTO, University at Buffalo Counseling Services, USA (Session #13)
amberlyrae@gmail.com

MARK PARIS, University of Florida, USA (Session #34)
mparis@ufl.edu

AGATA PASIKOWSKA, Warsaw School of Social Science and Humanities, Poland (Session #52)
agata.pasikowska@gmail.com

ANTHONY J. PAVLO, Miami University, USA (Session #58)
pavloaj@muohio.edu

HANA PRIKRYLOVA KUCEROVA, Department of Psychiatry—Medical Faculty of the Masaryk University, Czech Republic (Session #20)
kuceroвахanka@gmail.com

RADOVAN PRIKRYL, Department of Psychiatry—Medical Faculty of the Masaryk University, Czech Republic (Session #20)
rprikryl@fnbrno.cz

HARRY PROCTER, Independent Clinical Practice and University of Hertfordshire, UK (Sessions #5, 44)
harryprocter20@gmail.com

OLGA PUCURULL, University of Barcelona, Spain (Session #27)
opucurull@gmail.com

JONATHAN D. RASKIN, State University of New York at New Paltz, USA (Sessions #18, 19)
raskinj@newpaltz.edu

NICK REED, Centre for Personal Construct Psychology at University of Hertfordshire, UK (Session #23)
n.b.reed@herts.ac.uk

EMILY K. REESE, Miami University, USA (Session #10)
reeseek@muohio.edu

EUGÉNIA RIBEIRO, University of Minho, Portugal (Session #55)
eugenia@psi.uminho.pt

INMACULADA RODRÍGUEZ-GARCÍA, Forensic Medical Institute, Spain (Session #52)
inmaroga@telefonica.net

MARTA SALLA, University of Barcelona, Spain (Session #36)
martasalla84@hotmail.com

INES SAMETBAND, University of Calgary, Canada (Session #11)
insametb@ucalgary.ca

GIULIA SANDRI, Institute of Constructivist Psychology, Italy (Session #25)

JÖRN SCHEER, The PCP Information Centre, Germany (Session #49)
joern.scheer@joern-scheer.de

JEFFREY SCHWEITZER, Miami University, USA (Sessions #4, 29)
schweijr@muohio.edu

JOANA SENRA, University of Minho, Portugal (Session #55)
joanasenra@gmail.com

KRISTA SOCHOLOTIUK, University of British Columbia, Canada (Session #15)
ksocholotiuk@hotmail.com

JOAN-MIQUEL SOLDEVILLA, University of Barcelona, Spain (Session #23)

JOSÉ SORIANO, Eating Disorder Unit—Hospital of the Holy Cross and Saint Paul, Spain
(Session #36)
jsoriano@santpau.cat

TOM STRONG, University of Calgary, Canada (Sessions #3, 11)
strongt@ucalgary.ca

JILL C. THOMAS, SUNY Upstate Medical University, USA (Session #48)
thomasji@upstate.edu

CARMEN TOVAR-SÁNCHEZ, University of Seville, Spain (Sessions #32, 52)
stovarc@yahoo.es

FINN TSCHUDI, University of Oslo, Norway (Session #2)
Finn.Tschudi@psykologi.uio.no

ARLENE C. VADUM, Assumption College, USA (Session #30)
avadum@assumption.edu

SAUL URCID VELARDE, Autonomous University of the State of Mexico (Session #52)
saулurcid@yahoo.com.mx

JOSÉ ANTONIO VIRSEDA HERAS, Autonomous University of the State of Mexico (Session #52)
Virsedat@prodigy.net.mx

TON VOOGT, Schouten University and International Institute for the Dialogical Self, The Netherlands (Sessions #21, 53)
Ton.Voogt@snrschoutenglobal.nl

BEVERLY WALKER, University of Wollongong, Australia (Sessions #49)
bwalker@uow.edu.au

BILL WARREN, The University of Newcastle, Australia (Session #18)
William.Warren@newcastle.edu.au

KRISTIAN DAVID WEIHS, York University, Canada (Session #14)
kweihs@yorku.ca

DAVID WINTER, University of Hertfordshire, UK (Sessions #23, 49)
d.winter@herts.ac.uk

SPACE FOR WRITING DOWN ADDITIONAL CONTACT INFORMATION

[illegible]

[illegible]

[illegible]

